

Genus *Aphysonera* Karsch, 1894 Bamboo Ringlets

Entomologische Nachrichten. Berlin **20**: 190 (190-192).

Type-species: *Aphysonera pigmentaria* Karsch, by monotypy.

= *Raphiceropsis* Sharpe, 1894. *Proceedings of the Zoological Society of London* **1894**: 336 (334-353). Type-species: *Raphiceropsis pringlei* Sharpe, by original designation.

The genus *Aphysonera* belongs to the Family Nymphalidae Rafinesque, 1815; Subfamily Satyrinae Boisduval, 1833; Tribe Satyrini Boisduval, 1833; Subtribe Lethina, Reuter, 1896. There are no other genera in the Subtribe Lethina in the Afrotropical Region.

Aphysonera (**Bamboo Ringlets**) is an Afrotropical montane genus of two species. Generic revision by Kielland, 1989.

**Aphysonera pigmentaria* Karsch, 1894 Painted Bamboo Ringlet

Aphysonera pigmentaria Karsch, 1894. *Entomologische Nachrichten. Berlin* **20**: 191 (190-192).

Aphysonera pigmentaria Karsch, 1894. Pringle *et al.*, 1994: 53.



Aphysonera pigmentaria vumba. Male. Left – upperside; right – underside.
Cloudlands, Vumba, Zimbabwe. 25 September 1995.
Images M.C. Williams ex J. Greyling Collection.



Aphysoneura pigmentaria vumba. Female. Left – upperside; right – underside.
Cloudlands, Vumba, Zimbabwe. 26 March 1993.
Images M.C. Williams ex J. Greyling Collection.

Alternative common names: Bamboo painted ringlet; bamboo ringlet; painted ringlet.

Type locality: [Tanzania]: “Umgegeng von Mlalo in Nord-Usambara”.

Distribution: Democratic Republic of Congo, Uganda, Kenya, Tanzania, Malawi, Zambia, Mozambique (Congdon & Bampton, 2009), Zimbabwe.

Recorded, in error, from Nigeria and Cameroon (Larsen, 1991c).

Habitat: The bamboo zone of montane forest. In Kenya this zone is at altitude 1 900 to 2 800 m (subspecies *pringlei*) (Larsen, 1991c). Further south, in Zambia, this drops to about 1 500 m (subspecies *latilimba*) (Heath *et al.*, 2002). In Tanzania the various subspecies occur at the following altitudes: subspecies *pigmentaria* 800 to 2 200 m; subspecies *semilatilimba* 1 400 to 2 000 m; subspecies *songea* 1 700 to 1 900 m; subspecies *kanga* 1 600 to 2 000 m; subspecies *uzungwae* 1 700 to 2 200 m; subspecies *mbulu* 2 000 to 2 400 m; subspecies *seminigra* 1 800 to 2 100 m; subspecies *obnubila* up to 2 500 m (Kielland, 1990d).

Habits: Easily mistaken for a pierid when in flight (Pringle *et al.*, 1994). Compared to most other satyrines this is a very lively butterfly, which often perches on bamboo leaves in sunny spots. Often it sits basking, with the wings half opened. Males aggressively defend territories from perches, on bamboo leaves, three, or more, metres above the ground (Larsen, 1991c). Specimens are occasionally seen feeding from fermented fruit (Kielland, 1990d).

Flight period: All year (Pringle *et al.*, 1994).

Early stages:

Congdon *et al.*, 2017 [final instar larva].

Larval food:

Festuca africana (Hack.) Clayton (Poaceae) [Congdon & Collins, 1998: 36; oviposition; subspecies *kiellandi*].

Oldeania alpina (K. Schum.) Stapleton (Poaceae) [Congdon *et al.*, 2017].

Oxytenanthera abyssinica (A. Rich.) Munro (Poaceae) [Kielland, 1990d: 78; subspecies *semilatilimba*].

Sinarundinaria alpina (K. Schum.) C.S. Chao & Renvoize (Poaceae) [Van Someren, 1974: 324; as *Arundinaria alpinus* Schuman].

Aphysoneura pigmentaria pigmentaria Karsch, 1894
Painted Bamboo Ringlet

Aphysoneura pigmentaria Karsch, 1894. *Entomologische Nachrichten*. Berlin **20**: 191 (190-192).

Type locality: [Tanzania]: “Umgegeng von Mlalo in Nord-Usambara”.

Distribution: Tanzania (north-east).

Specific localities:

Tanzania – Mlalo, North Usambara (TL); East and West Usambara Mountains (Kielland, 1990d).

Aphysoneura pigmentaria dewittei Bouyer, 2001
Katanga Painted Bamboo Ringlet

Aphysoneura pigmentaria dewittei Bouyer, 2001. *Entomologia Africana* 6 (2): 47 (47-48).

Type locality: Democratic Republic of Congo: Katanga.

Distribution: Democratic Republic of Congo.

Aphysoneura pigmentaria kanga Kielland, 1989
Morogoro Painted Bamboo Ringlet

Aphysoneura pigmentaria kanga Kielland, 1989. *Lambillionea* 89: 82 (73-94, 100-103).

Type locality: Tanzania: “Morogoro, Kanga Mt”.

Distribution: Tanzania.

Specific localities:

Tanzania – Known only from Kanga Mountain, Morogoro District (TL; Kielland, 1990d).

Aphysoneura pigmentaria kiellandi Congdon & Collins, 1998
Kingarana Painted Bamboo Ringlet

Aphysoneura pigmentaria kiellandi Congdon & Collins, 1998. *In: Supplement to Kielland's butterflies of Tanzania*: 36 (143 pp.).
ABRI and Lambillionea.

Type locality: Tanzania: “Loliondo, Kingarana Forest Reserve, 01.59.35S x 35.39.23E, 2200 m, 26.iii.1995, T C E Congdon.” Holotype (male) in African Butterfly Research Institute, Nairobi.

Diagnosis: Similar to subspecies *pringlei* but larger; much larger pale spot on costa (wedge-shaped in *kiellandi* but rectangular in *pringlei*); three pale subapical spots larger (Congdon & Collins, 1998).

Distribution: Kenya (south), Tanzania (north).

Specific localities:

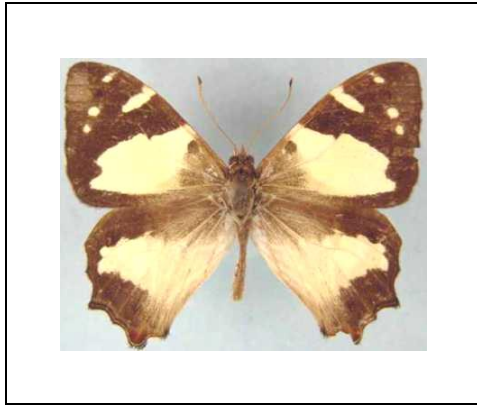
Kenya – Loita Hills (Congdon & Collins, 1998); Lebetoro Hills (Congdon & Collins, 1998).

Tanzania – Kingarana Forest Reserve, Loliondo (TL; Congdon & Collins, 1998).

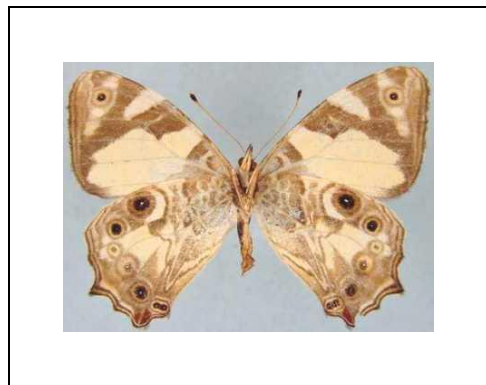
Aphysoneura pigmentaria latilimba Le Cerf, 1919
Mulanje Painted Bamboo Ringlet

Aphysoneura pigmentaria var. *latilimba* Le Cerf, 1919. *Bulletin du Muséum National d'Histoire Naturelle. Paris* 25: 164 (162-165).

Aphysoneura pigmentaria latilimba (Le Cerf, 1919). Dickson & Kroon, 1978.



Aphysoneura pigmentaria nr *latilimba*. Male. Left – upperside; right – underside.
Wingspan: 42mm. Zambia, Nyika Plateau, Chowo Forest. 6-V-1973. R.C. Dening.
(Newport Collection).



Aphysoneura pigmentaria nr *latilimba*. Female. Left – upperside; right – underside.
Wingspan: 47mm. Zambia, Nyika Plateau, Chowo Forest. 10-IV-1967. R.C. Dening.
(Newport Collection).

Type locality: [Malawi]: “Nyassaland”.

Distribution: Malawi, Zambia, Mozambique (Congdon & Bampton, 2009).

Specific localities:

Malawi – Mt Mulanje (Congdon *et al.*, 2010); Misuku Hills (Heath *et al.*, 2002); Nyika N.P. (J. Timberlake, pers. comm., 2019).

Zambia – Mafinga Mountains (Heath *et al.*, 2002); Makutu Mountains (Heath *et al.*, 2002); Chowo Forest, Nyika (male and female illustrated above).

Mozambique – Mount Mabu (Congdon & Bampton, 2009); Mt Inago (Congdon *et al.*, 2010); Mt Namuli (Congdon *et al.*, 2010).

Note: Heath *et al.* (2002) state that the populations of this butterfly from Zambia, and possibly those from the Misuku Hills in northern Malawi, probably represent undescribed subspecies, distinct from subspecies *latilimba* Le Cerf from southern Malawi. They do not, however, formally describe and name them.

***Aphysoneura pigmentaria mbulu* Kielland, 1989**
Mbulu Painted Bamboo Ringlet

Aphysoneura pigmentaria mbulu Kielland, 1989. *Lambillionea* **89**: 87 (73-94, 100-103).

Type locality: Tanzania: “Mbulu, Hasama Forest, 2.000 m”.

Distribution: Tanzania (Mbulu highlands).

Specific localities:

Tanzania – Hasama Forest (TL); Nou Forest (Kielland, 1990d).

Aphysoneura pigmentaria obnubila Riley, 1923
Nyasa Painted Bamboo Ringlet

Aphysoneura obnubila Riley, 1923. *Proceedings of the Entomological Society of London* **1923**: 28 (28-29).

Type locality: Tanzania: “Nyasa”.

Distribution: Tanzania (south), Malawi (north).

Specific localities:

Tanzania – Nyasa (TL); Southern Highlands.

Malawi – Northern Highlands.

Aphysoneura pigmentaria pringlei (Sharpe, 1894)
Kikuyu Painted Bamboo Ringlet

Rhaphiceropsis pringlei Sharpe, 1894. *Proceedings of the Zoological Society of London* **1894**: 336 (334-353).

Type locality: [Kenya]: “Kikuyu to Victoria Nyanza via Sotik”.

Distribution: Uganda (east), Kenya (Kikuyu to Victoria Nyanza).

Specific localities:

Kenya – Kikuyu (TL); Sotik (Sharpe, 1894); Toro (Le Cerf, 1919); Mount Elgon (Larsen, 1991c); Aberdares (Larsen, 1991c); Mount Kenya (Larsen, 1991c).

kenyae Le Cerf, 1919 (as var. of *Aphysoneura pigmentaria*). *Bulletin du Muséum National d'Histoire Naturelle. Paris* **25**: 164 (162-165). Kenya: “Escarpement et Toro”.

Aphysoneura pigmentaria semilatilimba Kielland, 1989
Mpanda Painted Bamboo Ringlet

Aphysoneura pigmentaria semilatilimba Kielland, 1989. *Lambillionea* **89**: 80 (73-94, 100-103).

Type locality: Tanzania: “Rukwa District, Bisi Forest, 2.200 m”.

Distribution: Tanzania (montane areas of Kigoma, Mpanda, Ufipa), Democratic Republic of Congo (east).

Specific localities:

Tanzania – Bisi Forest (TL); Mpanda (Kielland, 1990d); Kigoma (Kielland, 1990d); Ufipa (Ntakatta, Sitebi, Mahale, Mbulu Mountain, Chala, Mbisi Mountain) (Kielland, 1990d).

Democratic Republic of Congo – Mt Mitumba (Ducarme, 2018).

Aphysoneura pigmentaria seminigra Kielland, 1985
Mambega Painted Bamboo Ringlet

Aphysoneura pigmentaria seminigra Kielland, 1985. *Lambillionea* **85**: 105 (95-112).

Type locality: Tanzania: “Morogoro Distr., Nguru Mts., Mambega Mt., 2000 m”.

Distribution: Tanzania (east).

Specific localities:

Tanzania – Mambega Mountain (TL); Nguru Mountains (Kielland, 1990d).

Aphysoneura pigmentaria songeana Kielland, 1989
Kitesa Painted Bamboo Ringlet

Aphysoneura pigmentaria songeana Kielland, 1989. *Lambillionea* **89**: 85 (73-94, 100-103).

Type locality: Tanzania: “Songea, Mbinga, Kitesa Forest, 1.800 m”.

Distribution: Tanzania (Kitesa Forest in the Matengo Hills).

Specific localities:

Tanzania – Known only from the Kitesa Forest, Matengo Hills in the Songea Region (TL; Kielland, 1990d).

Aphysoneura pigmentaria uzungwa Kielland, 1989
Uzungwa Painted Bamboo Ringlet

Aphysoneura pigmentaria uzungwa Kielland, 1989. *Lambillionea* **89**: 83 (73-94, 100-103).

Type locality: Tanzania: “Mufindi, Luisenga”.

Distribution: Tanzania (east-central).

Specific localities:

Tanzania – Mufindi (TL); Uzungwa Range (Kielland, 1990d); Njombe Highlands (Kielland, 1990d); Mount Luhombero in the Mwanihana Forest (Kielland, 1990d).

Aphysoneura pigmentaria vumba Kielland, 1989
Vumba Painted Bamboo Ringlet

Aphysoneura pigmentaria vumba Kielland, 1989. *Lambillionea* **89**: 81 (73-94, 100-103).

Aphysoneura pigmentaria vumba Kielland, 1989. Pringle *et al.*, 1994: 53.



Aphysoneura pigmentaria vumba. Male. Left – upperside; right – underside.
Cloudlands, Vumba, Zimbabwe. 25 September 1995.
Images M.C. Williams ex J. Greyling Collection.



Aphysoneura pigmentaria vumba. Female. Left – upperside; right – underside.
Cloudlands, Vumba, Zimbabwe. 26 March 1993.
Images M.C. Williams ex J. Greyling Collection.

Type locality: Zimbabwe: “Mt. Vumba”.

Diagnosis: Close to subspecies *latilimba* from which it can be distinguished by the fact that the zigzag line on the underside has a shorter spike, which ends well short of the eyespot (Pringle *et al.*, 1994).

Distribution: Zimbabwe.

Specific localities:

Zimbabwe – Vumba Mountains (TL); Tarua Forest, in the central highlands (Pennington); Cecil Kop, near Mutare (Pennington); Penhalonga (Pringle *et al.*, 1994); Chitoras (Pringle *et al.*, 1994).

****Aphysoneura scapulifascia* Joicey & Talbot, 1922**
Western Bamboo Ringlet

Aphysoneura pigmentaria scapulifascia Joicey & Talbot, 1922. *Bulletin of the Hill Museum, Witley* 1: 342 (339-342).

Alternative common names: Western Painted Ringlet; Western Bamboo Ringlet.

Type locality: [Democratic Republic of Congo]: “Kisaba, Bugoie Forest, W. Kivu”.

Diagnosis: Differs from *Aphysoneura pigmentaria* on the hindwing underside where the dents in the dentate brown line in the discal area are noticeably shorter (Kielland, 1990d).

Distribution: Nigeria, Cameroon, Democratic Republic of Congo, Uganda, ?Rwanda, Burundi, Kenya, ?Tanzania (Kielland, 1990d).

Habitat: Bamboo zone of montane forest. In Kenya it is found at altitudes above 2 800 m, i.e. above the upper limit of *Aphysoneura pigmentaria*. In Nigeria it occurs at much lower altitudes, viz. 1 900 m on the Mambilla Plateau (Dowsett *et al.*, 1989).

Habits: Similar to those of *Aphysoneura pigmentaria*. It often perches with the wings half-opened on sunlit bamboo leaves. Males defend territories from such perches rather pugnaciously (Larsen, 2005a).

Early stages: Nothing published.

Larval food:

Arundinaria species (Poaceae) [Larsen, 2005a].

Bamboos (Poaceae) [Larsen, 1991c: 265].

***Aphysoneura scapulifascia scapulifascia* Joicey & Talbot, 1922**
Western Bamboo Ringlet

Aphysoneura pigmentaria scapulifascia Joicey & Talbot, 1922. *Bulletin of the Hill Museum, Witley* 1: 342 (339-342).

Type locality: [Democratic Republic of Congo]: “Kisaba, Bugoie Forest, W. Kivu”.

Distribution: Democratic Republic of Congo (Kivu), ?Rwanda, Burundi, ?Tanzania.

Specific localities:

Democratic Republic of Congo – Bugoie Forest, Kisaba (TL).

Tanzania – ?Bukoba Region (Kielland, 1990d).

Aphysoneura scapulifascia collinsi Kielland, 1989
Elgon Western Bamboo Ringlet

Aphysoneura scapulifascia collinsi Kielland, 1989. *Lambillionea* **89**: 100 (73-94, 100-103).

Type locality: Kenya: “Mt. Elgon, 2.850 m”.

Distribution: Kenya (Mt Elgon).

Specific localities:

Kenya – Mount Elgon at 2 850 m. (TL).

Aphysoneura scapulifascia harmi Knoop, 2009
Nigeria Western Bamboo Ringlet

Aphysoneura scapulifascia harmi Knoop, 2009. *Entomologia Africana* **14** (2): 10 (10-13).

Type locality: Nigeria: “”.

Distribution: Nigeria.

Specific localities:

Nigeria – (TL).

Aphysoneura scapulifascia kigeziae Kielland, 1989
Uganda Western Bamboo Ringlet

Aphysoneura scapulifascia kigeziae Kielland, 1989. *Lambillionea* **89**: 101 (73-94, 100-103).

Type locality: Uganda: “Kigezi, Kanaba Gap”.

Distribution: Uganda (Kigezi district).

Specific localities:

Uganda – Kanaba Gap, Kigezi (TL).

Aphysoneura scapulifascia occidentalis Joicey & Talbot, 1924
Cameroon Western Bamboo Ringlet

Aphysoneura pigmentaria occidentalis Joicey & Talbot, 1924. *Entomologist* **57**: 37 (37-40).

Aphysoneura scapulifascia occidentalis Joicey & Talbot, 1924. Kielland, 1989.

Type locality: Cameroon: “Banso Mountains, north of Kumbo”.

Distribution: Nigeria (east), Cameroon (highlands).

Specific localities:

Nigeria – Mambilla Plateau, at 1 900 m (Dowsett *et al.*, 1989).

Cameroon – north of Kumbo, Banso Mountains (TL).

Aphysoneura scapulifascia zairensis Kielland, 1989
Congo Western Bamboo Ringlet

Aphysoneura scapulifascia zairensis Kielland, 1989. *Lambillionea* **89**: 101 (73-94, 100-103).

Type locality: Democratic Republic of Congo: “Secteur Tshiaberimu, Musawaki Riv. affl. Talya Nord, 2.720 m”.

Distribution: Democratic Republic of Congo (Tshiaberimu).

Specific localities:

Democratic Republic of Congo – Tshiaberimu (TL).