

Genus *Laodice* Bouyer, 2023 Blue Empresses

Bouyer, T. 2023. The genera of the tribe Charaxini (Papilionoidea, Nymphalidae, Charaxinae). *Metamorphosis* **34**: 62.

Genus *Laodice* **gen. nov.**

Type species: *Papilio lycurgus* Fabricius, 1793.

(previously species-group *Lycurgus* of Subgenus *Euxanthe* Hübner, 1819).

lycurgus-group **comb. nov.**

Laodice lycurgus (Fabricius, 1793) Midnight Blue Empress

Papilio lycurgus Fabricius, 1793. *Entomologia Systematica emendata et aucta* **3** (1): 67 (488 pp.).

Charaxes (Euxanthe) lycurgus (Fabricius, 1793). Aduse-Poku *et al.*, 2009.

Laodice lycurgus (Fabricius, 1793). Bouyer, 2023. **comb. nov.**



Laodice lycurgus. Male. Left – upperside; right – underside.
Kagoro, northern Nigeria. July 1983. S. Collins. ex ABRI Collection (ABRI 2018-5338).
Images M.C. Williams ex ABRI Collection.



Laodice lycurgus. Male. Left – upperside; right – underside.
Camp Kombo, Cameroon. 5 May 2019. J. Dobson.
Images M. Williams ex Dobson Collection.



Laodice lycurgus. Female. Left – upperside; right – underside.
Kagoro, northern Nigeria. July 1983. S. Collins. ex ABRI Collection (ABRI 2018-5338).
Images M.C. Williams ex ABRI Collection.

Type locality: “in Africa”.

Diagnosis: Differs from *Charaxes zelica* in the deeply concave margin of the forewing, the hindwing blue spots are closer to the margin and the presence of submarginal blue spots on the forewing (Kielland, 1990d).

Distribution: Guinea, Sierra Leone, Liberia, Ivory Coast, Ghana, Togo, Benin (south, central), Nigeria, Cameroon, Equatorial Guinea (Bioko), Gabon, Congo, Central African Republic, Angola (north), Democratic Republic of Congo, South Sudan, Uganda (west), Tanzania (eastern shores of Lake Tanganyika).

Specific localities:

Guinea – Ziama (Sáfián *et al.*, 2020).

Liberia – Wonegizi (Sáfián *et al.*, 2020).

Ivory Coast – Bossematie (H. Fermon, *vide* Larsen, 2005a).

Ghana – Atewa Range (Joly, 2003); Bobiri Butterfly Sanctuary (Larsen *et al.*, 2007); Boabeng-Fiema Monkey Sanctuary (Larsen *et al.*, 2009).

Benin – see Coache *et al.*, 2017.

Nigeria – Warri (H. Boersma, *vide* Larsen, 2005a); Kagoro Forest (Larsen, 2005a).

Cameroon – Korup (Larsen, 2005a).

Gabon – Tchimbele (Vande weghe, 2010); Mboumie (Vande weghe, 2010); Ndjoli (Vande weghe, 2010); Waka (Vande weghe, 2010); Mpivie (Vande weghe, 2010); Nkomi (Vande weghe, 2010); Camp PPG, Bateke Plateau (Vande weghe, 2010).

Congo – Brazzaville (TL of *bernardiana*).

Central African Republic – Dzanga (Noss, 1998).

Democratic Republic of Congo – Ituri Forest (Ducarme, 2018); Central Forest Block (Ducarme, 2018).

Uganda – Semuliki N.P. (Davenport & Howard, 1996).

Tanzania – North-west Mpanda District (Kielland, 1990d); Kigoma (Kielland, 1990d); Gombe Stream National Park (Kielland, 1990d).

Habitat: Lowland evergreen forest and riverine forest. In Tanzania at altitudes from 800 to 1500 m (Kielland, 1990d). It occurs also in degraded habitats, such as cocoa plantations (Larsen, 2005a).

Habits: This is the commonest species in the group but is uncommon west of Ghana (Larsen, 2005a). Males fly along river beds in search of otter and bird droppings from which to feed (Kielland, 1990d). Specimens come readily to fermented fruit, unlike other members of the group (Larsen, 2005a).

Early stages: Nothing published.

Larval food:

Albizia zygia (DC.) J.F.Macb. (Fabaceae) [Henning, S., 1989: 385].

Dalbergia species (Fabaceae) [Larsen, 2005a].

Dichapetalum species (Dichapetalaceae) [Larsen, 2005a].

Philenoptera cyanescens (Schumach. & Thonn.) Roberty (Fabaceae) [Henning, S., 1989: 385].

as *Lonchocarpus cyanescens* (Schum. & Thonn.) Benth.].
Millettia species (Fabaceae) [Larsen, 2005a].
Paullinia pinnata L. (Sapindaceae) [Vuattoux & Blandin, 1977; Ivory Coast].
Pterocarpus santalinoides L'Hér. ex DC. (Fabaceae) [Vuattoux & Blandin, 1977; Ivory Coast].
Trachyphrynium species (Marantaceae) [Larsen, 2005a].

laodice Drury, 1782 (as sp. of *Papilio*). *Illustrations of Natural History* 3: index et 34 (76 pp.). London. "Coast of Africa, near Sierra Leone". Invalid; junior primary homonym of *Papilio laodice* Pallas, 1771 [Nymphalidae].

nesiope Hewitson, 1854 *in* Hewitson, 1851-6 (as sp. of *Nymphalis*). *Illustrations of new species of exotic butterflies* 1: 88 (124 pp.). London. Sierra Leone.

Laodice lycurgus lycurgus (Fabricius, 1791)

Twilight Blue Empress

Papilio lycurgus Fabricius, 1793. *Entomologia Systematica emendata et aucta* 3 (1): 67 (488 pp.).
Charaxes (Euxanthe) lycurgus (Fabricius, 1793). Aduse-Poku *et al.*, 2009.
Laodice lycurgus lycurgus (Fabricius, 1793). Bouyer, 2023. **comb. nov.**



Laodice lycurgus lycurgus. Male. Left – upperside; right – underside.
 Kagoro, northern Nigeria. July 1983. S. Collins. ex ABRI Collection (ABRI 2018-5338).
 Images M.C. Williams ex ABRI Collection.



Laodice lycurgus lycurgus. Female. Left – upperside; right – underside.
 Kagoro, northern Nigeria. July 1983. S. Collins. ex ABRI Collection (ABRI 2018-5338).
 Images M.C. Williams ex ABRI Collection.

Laodice lycurgus bernadiana Plantrou, 1978)

Congo Twilight Blue Empress

Charaxes laodice bernardiana Plantrou, 1978. *Annales de la Société Entomologique de France* (N.S.) 14: 526.
 = *Charaxes lycurgus* d'Abreva, 2004: 514.
Laodice lycurgus bernadiana (Plantrou, 1978). Bouyer, 2023. **comb. nov.**

Type locality: Congo: “Brazzaville, R.P. du Congo”. Holotype (male) in the Muséum national d’Histoire naturelle, Paris.

***Laodice doubledayi* (Aurivillius, [1899])
Auroral Blue Empress**

Charaxes doubledayi Aurivillius, [1899] *in* Aurivillius, [1898-9]. *Kungliga Svenska Vetenskapakademiens Handlingar* **31** (5): 244 (1-561).

Charaxes (Euxanthe) doubledayi Aurivillius, [1899]. Aduse-Poku *et al.*, 2009.

Laodice doubledayi (Aurivillius, [1899]). Bouyer, 2023. **comb. nov.**



Laodice doubledayi Male. Left – upperside; right – underside.
Djoun, southern Cameroon. July 2010. S. Collins. ex ABRI Collection (ABRI 2018-5261).
Images M.C. Williams ex ABRI Collection.



Laodice doubledayi Female. Left – upperside; right – underside.
Beni, Kivu, DRC. November 1983. R. Ducarme. ex ABRI Collection (ABRI 2018-5262).
Images M.C. Williams ex ABRI Collection.

Type locality: Sierra Leone: “Sierra Leona”; Ghana: “Ashanti”; Togo; Nigeria: “Old Calabar”; Cameroon: “Kamerun”; Gabon: “Ogowe”.

Distribution: Guinea, Sierra Leone, Ivory Coast, Ghana, Togo, Nigeria (south and Cross River loop), Cameroon, Equatorial Guinea (Bioko), Gabon, Angola (Mendes *et al.*, 2018), Congo, Central African Republic, Democratic Republic of Congo, Tanzania (west).

Specific localities:

Guinea – Zياما (Sáfián *et al.*, 2020).

Sierra Leone – Tiwai Island (Larsen, 2005a).

Ivory Coast – Mt Tonkoui (H. Warren *teste* Larsen, 2005a); Yeale (H. Warren-Gash *teste* Larsen, 2005a).

Ghana – Atewa Range (Joly, 2003); Bobiri Butterfly Sanctuary (Larsen *et al.*, 2007).

Nigeria – Old Calabar (Aurivillius, 1899).

Gabon – Ogowe (Aurivillius, 1899); Tchimbelle (Vande weghe, 2010); Kitomba (Vande weghe, 2010).

Democratic Republic of Congo – Ituri Forest (Ducarme, 2018); Central Forest Block (Ducarme, 2018); Mt Mitumba (Ducarme, 2018).

Habitat: Lowland evergreen forest.

Habits: A very rare butterfly (Larsen, 2005a).

Early stages: Nothing published.

Larval food: Nothing published.

viridis Röber, 1936 (as ab. of *Charaxes doubledayi*). *Entomologische Rundschau* **53**: 576 (575-580). No locality given.

Laodice mycerina (Godart, [1824]) Dawning Blue Empress

Nymphalis mycerina Godart, [1824] *in* Latreille & Godart, [1819], [1824]. *Encyclopédie Méthodique. Histoire Naturelle [Zoologie]* **9** Entomologie: 369 (1-328 [1819], 329-828 [1824]). Paris.

Charaxes (Euxanthe) mycerina (Godart, [1824]). Aduse-Poku *et al.*, 2009.

Laodice mycerina (Godart, [1824]). Bouyer, 2023. **comb. nov.**



Laodice mycerina mycerina. Male. Left – upperside; right – underside.
Tano Ofin, western Ghana. August 2005. RV & SY. ex ABRI Collection (ABRI 2018-5340).
Images M.C. Williams ex ABRI Collection.



Laodice mycerina mycerina. Female. Left – upperside; right – underside.
Banco, Ivory Coast. April 1983. S. Collins. ex ABRI Collection (ABRI 2018-5341).
Images M.C. Williams ex ABRI Collection.

Type locality: No locality given (probably Sierra Leone (Larsen, 2005a)).

Distribution: Guinea, Sierra Leone, Liberia, Ivory Coast, Ghana, Nigeria, Cameroon, Equatorial Guinea, Gabon, Congo, Central African Republic, Democratic Republic of Congo.

Habitat: Lowland evergreen forest.
Habits: An uncommon species (Larsen, 2005a).
Early stages: Nothing published.
Larval food: Nothing published.

Laodice mycerina mycerina (Godart, [1824])
Dawning Blue Empress

Nymphalis mycerina Godart, [1824] *in* Latreille & Godart, [1819], [1824]. *Encyclopédie Méthodique. Histoire Naturelle [Zoologie]* 9 Entomologie: 369 (1-328 [1819], 329-828 [1824]). Paris.
Charaxes (Euxanthe) mycerina mycerina (Godart, [1824]). Aduse-Poku *et al.*, 2009.
Laodice mycerina mycerina (Godart, [1824]). Bouyer, 2023. **comb. nov.**



Laodice mycerina mycerina. Male. Left – upperside; right – underside.
Tano Ofin, western Ghana. August 2005. RV & SY. ex ABRI Collection (ABRI 2018-5340).
Images M.C. Williams ex ABRI Collection.



Laodice mycerina mycerina. Female. Left – upperside; right – underside.
Banco, Ivory Coast. April 1983. S. Collins. ex ABRI Collection (ABRI 2018-5341).
Images M.C. Williams ex ABRI Collection.

Type locality: No locality given (probably Sierra Leone (Larsen, 2005a)).
Distribution: Guinea, Sierra Leone, Liberia, Ivory Coast, Ghana, Nigeria (west).
Specific localities:
Guinea – Zياما (Sáfián *et al.*, 2020).
Sierra Leone – Freetown (Owen & Chanter, 1972).
Liberia – Wologizi (Sáfián *et al.*, 2020); Wonegizi (Sáfián *et al.*, 2020).
Ghana – Atewa Range (Joly, 2003); Bobiri Butterfly Sanctuary (Larsen *et al.*, 2007).

Laodice mycerina nausicaa (Staudinger, 1891)
Eastern Dawning Blue Empress

Charaxes nausicaa Staudinger, 1891. *Deutsche Entomologische Zeitschrift, Iris* 4: 137 (61-157).
Charaxes (Euxanthe) mycerina nausicaa Staudinger, 1891. Aduse-Poku *et al.*, 2009.
Laodice mycerina nausicaa (Staudinger, 1891). Bouyer, 2023. **comb. nov.**

Type locality: Cameroon: “Barombi-Station, im Hinterlande von Kamerun”.

Distribution: Nigeria (east), Cameroon, Equatorial Guinea (Bioko Island), Gabon, Congo, Central African Republic, Democratic Republic of Congo.

Specific localities:

Nigeria – Oban Hills (Larsen, 2005a).

Cameroon – Barombi Station (TL); Korup (Larsen, 2005a).

Gabon – Waka (Vande weghe, 2010); Lope (Vande weghe, 2010); Ipassa (Vande weghe, 2010).

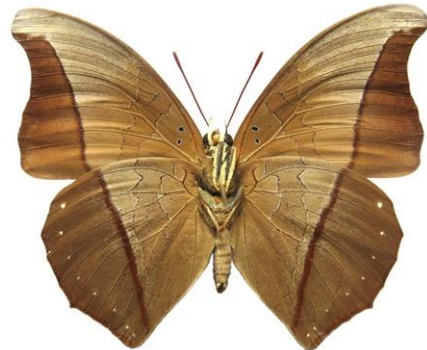
Central African Republic – Bangui (Plantrou, 1978); Dzanga (Noss, 1998).

Democratic Republic of Congo – Ituri Forest (Ducarme, 2018); Central Forest Block (Ducarme, 2018); Mt Mitumba (Ducarme, 2018).

vietti Plantrou, 1978 (as ssp. of *Charaxes mycerina*). *Annales de la Société Entomologique de France* (N.S.) 14: 517 (515-533). Central African Republic: “Bangui, R.C.A.”.

***Laodice porthos* (Grose-Smith, 1883)**
Astral Blue Empress

Charaxes porthos Grose-Smith, 1883. *Entomologist's Monthly Magazine* 20: 57 (57-58).
Charaxes (Euxanthe) porthos Grose-Smith, 1883. Aduse-Poku *et al.*, 2009.
Laodice porthos (Grose-Smith, 1883). Bouyer, 2023. **comb. nov.**



Laodice porthos porthos. Male. Left – upperside; right – underside.
Beni, Kivu, DRC. April 1985. R. Ducarme. ex ABRI Collection (ABRI 2018-5259).
Images M.C. Williams ex ABRI Collection.



Laodice porthos porthos. Female. Left – upperside; right – underside.
Biakatu, Kivu, DRC. September 2010. ABRI. ex ABRI Collection (ABRI 2018-5260).
Images M.C. Williams ex ABRI Collection.

Type locality: Cameroon: “Camaroons”.

Distribution: Guinea, Sierra Leone, Liberia, Ivory Coast, Ghana, Nigeria, Cameroon, Gabon, Congo, Central African Republic, Democratic Republic of Congo, Uganda, Tanzania.

Misattributed to the Kenya butterfly fauna on numerous occasions (Congdon & Collins, 1998).

Habitat: Lowland evergreen forest (n nominate subspecies); drier forests (subspecies *gallayi*) (Larsen, 2005a).

Habits: Subspecies *gallayi* is very rare and the nominate subspecies is scarce (Larsen, 2005a). Attracted to fermented bananas (Congdon & Collins, 1998).

Early stages: Nothing published.

Larval food: Nothing published.

***Laodice porthos porthos* (Grose-Smith, 1883)
Astral Blue Empress**

Charaxes porthos Grose-Smith, 1883. *Entomologist's Monthly Magazine* **20**: 57 (57-58).

Charaxes (Euxanthe) porthos porthos Grose-Smith, 1883. Aduse-Poku *et al.*, 2009.

Laodice porthos porthos (Grose-Smith, 1883). Bouyer, 2023. **comb. nov.**



Laodice porthos porthos. Male. Left – upperside; right – underside.
Beni, Kivu, DRC. April 1985. R. Ducarme. ex ABRI Collection (ABRI 2018-5259).
Images M.C. Williams ex ABRI Collection.



Laodice porthos porthos. Female. Left – upperside; right – underside.
Biakatu, Kivu, DRC. September 2010. ABRI. ex ABRI Collection (ABRI 2018-5260).
Images M.C. Williams ex ABRI Collection.

Type locality: Cameroon: “Camaroons”.

Distribution: Nigeria (east), Cameroon, Gabon, Congo, Central African Republic, Democratic Republic of Congo (Ubangi, Mongala, Uele, Tshopo, Kinshasa, Sankuru).

Specific localities:

Nigeria – Oban Hills (Larsen, 2005a).

Cameroon – Barombi Station (Staudinger, 1891).

Gabon – Tchimbelle (Vande weghe, 2010); Waka (Vande weghe, 2010).

Central African Republic – Dzanga (Noss, 1998).

midas Staudinger, 1891 (as sp. of *Charaxes*). *Deutsche Entomologische Zeitschrift, Iris* **4**: 135 (61-157). Cameroon: “Barombi-Station im Hinterlande von Kamerun”.

dunkeli Röber, 1939 (as sp. of *Charaxes*). *Entomologische Rundschau* **56**: 357 (357-358). Cameroon: “Kamerun”.

***Laodice porthos dummeri* (Joicey & Talbot, 1922)**
Bold Astral Blue Empress

Charaxes porthos dummeri Joicey & Talbot, 1922. *Bulletin of the Hill Museum, Witley* **1**: 338 (335-338).

Charaxes (Euxanthe) porthos dummeri Joicey & Talbot, 1922. Aduse-Poku *et al.*, 2009.

Laodice prothos dummeri (Joicey & Talbot, 1922). Bouyer, 2023. **comb. nov.**



Laodice porthos dummeri. Male. Left – upperside; right – underside.
Mabira Forest, Uganda. 3 May 2009. P. Ward.
Images M.C. Williams ex P. Ward Collection.

Type locality: Uganda: “Mabera Forest”.

Diagnosis: Male of this subspecies characterized, on the forewing upperside, by an indistinct blue spot at the end of the cell (Congdon & Collins, 1998).

Distribution: Democratic Republic of Congo, Uganda, Tanzania (north-west).

Reported from north-west Kenya by Williams (1969), van Someren (1974) and Henning (1989) but apparently a misidentification for *Charaxes zelica depuncta* (Larsen, 1991c).

Specific localities:

Democratic Republic of Congo – Ituri Forest (Ducarme, 2018); Semuliki Valley (Ducarme, 2018); Central Forest Block (Ducarme, 2018); Mt Mitumba (Ducarme, 2018).

Uganda – Mabira Forest (TL).

Tanzania – Munene Forest (common) (Congdon & Collins, 1998); Minziro Forest (scarce) (Congdon & Collins, 1998).

***Laodice porthos gallayi* (van Someren, 1968)**
Western Astral Blue Empress

Charaxes porthos gallayi van Someren, 1968. *Bulletin de l'Institut Fondamental d'Afrique Noire* **30**: 223 (221-225).

Charaxes (Euxanthe) porthos gallayi van Someren, 1968. Aduse-Poku *et al.*, 2009.

Laodice porthos gallayi (van Someren, 1968). Bouyer, 2023. **comb. nov.**

Type locality: Ivory Coast: “Ivory Coast, Divo”. Holotype (male) in the Muséum national d’Histoire naturelle, Paris.

Distribution: Guinea, Sierra Leone, Liberia, Ivory Coast, Ghana, Nigeria (west).

Specific localities:

Guinea – near Conakry, Nimba (Larsen, 2005a); Ziama (Sáfián *et al.*, 2020).

Liberia – Wonegizi (Sáfián *et al.*, 2020).

Ivory Coast – Divo (TL); Banco (H. Warren-Gash, *vide* Larsen, 2005a).

Ghana – Atewa Range (Joly, 2003); Bobiri Butterfly Sanctuary (Larsen *et al.*, 2007).

Nigeria – Olokemeji near Ibadan (Larsen, 2005a); Warri (H. Boersma, *vide* Larsen, 2005a).

Laodice porthos katangae (Rousseau-Decelle, 1931)
Southern Astral Blue Empress

Charaxes katangae Rousseau-Decelle, 1931. *Bulletin de la Société Entomologique de France* **1931**: 87 (87-90).

Charaxes (Euxanthe) porthos katangae Rousseau-Decelle, 1931. Aduse-Poku *et al.*, 2009.

Laodice porthos katangae (Rousseau-Decelle, 1931). Bouyer, 2023. **comb. nov.**

Type locality: [Democratic Republic of Congo]: “Katanga (Congo belge)”. Holotype (male) in the collection of Mr. I. Grahame.

Distribution: Democratic Republic of Congo (Lualaba).

Laodice zelica (Butler, 1869)
Twilight Blue Empress

Charaxes zelica Butler, 1869. *Entomologist’s Monthly Magazine* **6**: 28 (28-29).

Charaxes (Euxanthe) zelica Butler, 1869. Aduse-Poku *et al.*, 2009.

Laodice zelica (Butler, 1869). Bouyer, 2023. **comb. nov.**



Laodice zelica zelica. Male. Left – upperside; right – underside.
Kibi, Ghana. January 1976. Ex T.M. ex ABRI Collection (ABRI 2018-5342).
Images M.C. Williams ex ABRI Collection.



Laodice zelica zelica. Female. Left – upperside; right – underside.
Mpasaso, Ghana. August 2003. RV. ex ABRI Collection (ABRI 2018-5343).
Images M.C. Williams ex ABRI Collection.

Type locality: Ghana: “West Africa (Ashanti)”. Holotype (male) in the Natural History Museum, London.

Diagnosis: Differs from the related *Charaxes lycurgus* in the straighter hindwing distal border (Kielland, 1990d).

Distribution: Guinea, Sierra Leone, Liberia, Ivory Coast, Ghana, Benin, Nigeria, Cameroon, Congo, Angola, Central African Republic, Democratic Republic of Congo, South Sudan, Uganda, Kenya, Tanzania.

Habitat: Forest, at altitudes between 800 and 1 000 m (Henning, 1989). Blandin *et al.* (1975) record it in dense savanna in Ivory Coast. In Tanzania subspecies *toyoshimai* occurs at altitudes from 800 to 1 500 m (Kielland, 1990d).

Habits: Nearly as rare as *Charaxes porthos* (Larsen, 2005a). Males patrol stream beds in search of otter droppings. The flight is relatively slow for a species of *Charaxes* (Larsen, 1991c). Individuals, as for those of *Charaxes porthos*, are rarely attracted by fermenting fruit (Kielland, 1990d; Larsen, 2005a).

Early stages: Nothing published.

Larval food: Nothing published.

Laodice zelica zelica (Butler, 1869)
Twilight Blue Empress

Charaxes zelica Butler, 1869. *Entomologist's Monthly Magazine* 6: 28 (28-29).
Charaxes (Euxanthe) zelica zelica Butler, 1869. Aduse-Poku *et al.*, 2009.
Laodice zelica zelica (Butler, 1869). Bouyer, 2023. **comb. nov.**



Laodice zelica zelica. Male. Left – upperside; right – underside.
Kibi, Ghana. January 1976. Ex T.M. ex ABRI Collection (ABRI 2018-5342).
Images M.C. Williams ex ABRI Collection.



Laodice zelica zelica. Female. Left – upperside; right – underside.

Mpasaso, Ghana. August 2003. RV. ex ABRI Collection (ABRI 2018-5343).
Images M.C. Williams ex ABRI Collection.

Type locality: Ghana: “West Africa (Ashanti)”. Holotype (male) in the Natural History Museum, London.

Distribution: Guinea, ?Sierra Leone, Liberia, Ivory Coast, Ghana, Benin (south, central), Nigeria (west).

Specific localities:

Guinea – Nimba (Larsen, 2005a); Ziama (Sáfián *et al.*, 2020).

Liberia – Wonegizi (Sáfián *et al.*, 2020).

Ivory Coast – Bossematie (H. Fermon, *vide* Larsen, 2005a).

Ghana – Ashanti (TL); Atewa Range (Joly, 2003); Bobiri Butterfly Sanctuary (Larsen *et al.*, 2007).

Benin – see Coache *et al.*, 2017.

Laodice zelica depuncta (Joicey & Talbot, 1921)
Eastern Twilight Blue Empress

Charaxes zelica depuncta Joicey & Talbot, 1921. *Bulletin of the Hill Museum, Witley* **1**: 68 (40-166).

Charaxes (Euxanthe) zelica depuncta Joicey & Talbot, 1921. Aduse-Poku *et al.*, 2009.

Laodice zelica depuncta (Joicey & Talbot, 1921). Bouyer, 2023. **comb. nov.**



Laodice zelica depuncta. Male. Left – upperside; right – underside.
Mpanga Forest, Uganda. 24 April 2010. P. Ward.
Images M.C. Williams ex P. Ward Collection.

Type locality: Uganda: “Uganda, Mabira Forest”. Holotype (male) in the Natural History Museum, London.

Distribution: South Sudan, Democratic Republic of Congo, Uganda, Kenya (west).

Specific localities:

Democratic Republic of Congo – Ituri Forest (Ducarme, 2018); Central Forest Block (Ducarme, 2018); Mt Mitumba (Ducarme, 2018); Mt Blue (Ducarme, 2018).

Uganda – Mabira Forest (TL); Semuliki N.P. (S. Forbes, pers. comm., 2017).

Kenya – Elgon area (van Someren & Rogers, 1930); Nandi Hills (van Someren & Rogers, 1930); Kakamega Forest (Larsen, 1991c).

Laodice zelica rougeoti (Plantrou, 1978)
Central Twilight Blue Empress

Charaxes zelica rougeoti Plantrou, 1978. *Annales de la Société Entomologique de France* (N.S.) **14**: 521 (515-533).

Charaxes (Euxanthe) zelica rougeoti Plantrou, 1978. Aduse-Poku *et al.*, 2009.

Laodice zelica rougeoti (Plantrou, 1978). Bouyer, 2023. **comb. nov.**

Type locality: Central African Republic: “Bangui, E.C.A.”. Holotype (male) in the Muséum

national d'Histoire naturelle, Paris.

Distribution: Nigeria (east), Cameroon, Congo, Angola (north), Central African Republic, Democratic Republic of Congo (Ubangi, Mongala, Tshopo, Kwango, Lualaba).

Specific localities:

Central African Republic – Bangui (TL); Dzanga (Noss, 1998).

Laodice zelica toyoshimai (Carcasson, 1964)
Tanzanian Twilight Blue Empress

Charaxes zelica toyoshimai Carcasson, 1964. *Journal of the East Africa Natural History Society & Coryndon Museum* **24** (4): 63 (62-67).

Charaxes (Euxanthe) zelica toyoshimai Carcasson, 1964. Aduse-Poku *et al.*, 2009.

Laodice zelica toyoshimai (Carcasson, 1964). Bouyer, 2023. **comb. nov.**

Type locality: Tanzania: “Makuyu, Kigoma, Tanganyika”. Holotype (male) in the Natural History Museum, London.

Distribution: Tanzania (north-west).

Specific localities:

Tanzania – Makuyu, Kigoma (TL); Ntakatta Forest (Kielland, 1990d); Kasye Forest (Kielland, 1990d); Mihumu Forest (Kielland, 1990d).